

Berzico Rubber Duckbill Check Valves are designed to provide a solution to back flow prevention with high performance rubber compounds and manufacturing processes. These valves do not require replacement parts, extensive maintenance, or external energy to be operated which all combined generates higher reliability and reduces long term operational costs. The valve is ideal for applications such as outfalls, manholes, vaults, interceptors, diversion chambers as well as applications where sand and or other type of debris tend to accumulate beneath the valve.

Berzico Concentric Check Valve BCS Slip on configuration will perform in all outfall applications being a reliable back from preventer and can be operated partially and completely submerged. Curved bill feature is available upon request.

The selection of material of construction and hydraulic performance of the valve is based on the application requirements. The cracking pressure of the valve is approximately two inches of water column above differential pressure, which gives minimal stagnant water within the pipe and great backflow prevention capabilities.

Berzico's proprietary manufacturing procedures are unique and innovative and are 100% North American made. All valve configurations feature low pressure drop, low cracking pressure to open, no moving parts and-or replacement parts needed, various sizes and materials of constructions available to adapt to each demanding application in the market.



Materials of Construction

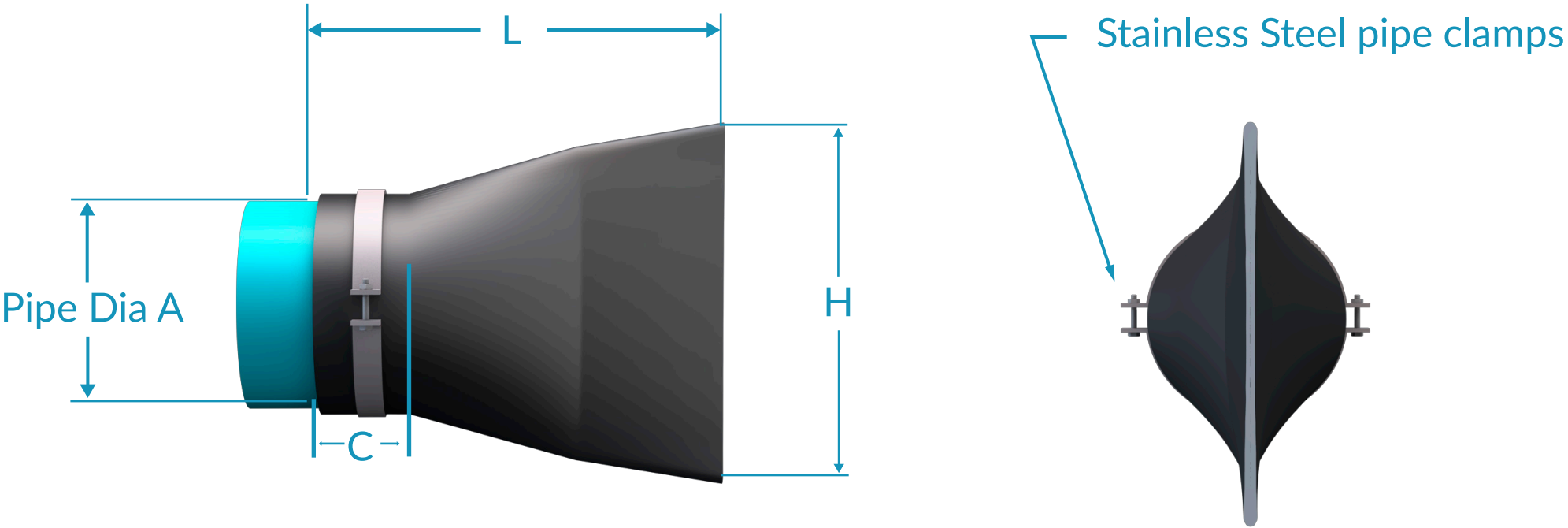
Elastomer

- Neoprene (standard)
- EPDM (optional)
- Other materials on request

Note: Berzico uses NSF-61 certified product elastomer.

Back Up Ring:

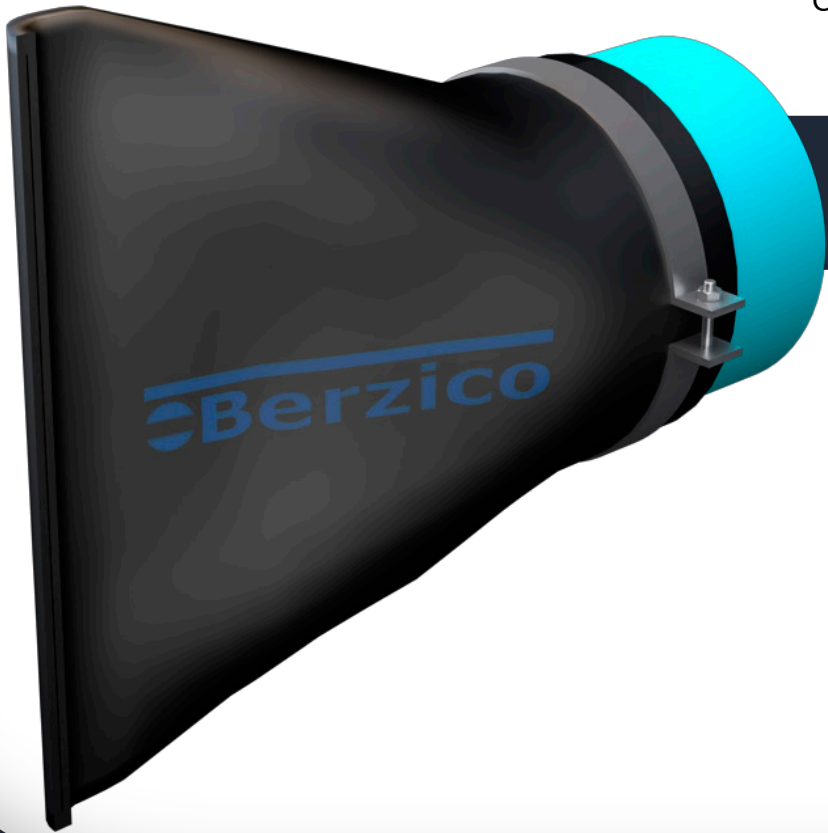
- 304 Stainless Steel (standard)
- 316 Stainless Steel (optional)
- Other materials upon request.



| Pipe Dia (inch) / (mm) | Dimensions (inch) / (mm) | | |
|------------------------|--------------------------|------------------|------------------|
| | Maximum Length L | Bill Height H | Cuff Length C |
| 4" / 100 | 12" / 300 | 7" / 170 | 1.75" / 44 |
| 5" / 127 | 16" / 400 | 9" / 228 | 2" / 50 |
| 6" / 150 | 16" / 400 | 11" / 279 | 2" / 50 |
| 8" / 200 | 17" / 430 | 13" / 330 | 2" / 50 |
| 10" / 250 | 22" / 550 | 17" / 430 | 3" / 76 |
| 12" / 300 | 26" / 650 | 20" / 500 | 4" / 100 |
| 14" / 350 | 26" / 650 | 22" / 550 | 4" / 100 |
| 16" / 400 | 29" / 736 | 27" / 685 | 4.5" / 114 |
| 18" / 450 | 32" / 812 | 27" / 685 | 6" / 150 |
| 20" / 500 | 35" / 889 | 33" / 838 | 8.5" / 215 |
| 22" / 550 | 39" / 990 | 33" / 838 | 8" / 200 |

| Pipe Dia (inch) / (mm) | Dimensions (inch) / (mm) | | |
|------------------------|--------------------------|------------------|------------------|
| | Maximum Length L | Bill Height H | Cuff Length C |
| 24" / 600 | 43" / 1092 | 40" / 1016 | 8" / 200 |
| 26" / 650 | 43" / 1092 | 40" / 1016 | 8" / 200 |
| 28" / 700 | 43" / 1092 | 40" / 1016 | 8" / 200 |
| 30" / 750 | 46" / 1168 | 49" / 1244 | 9" / 228 |
| 32" / 800 | 47" / 1193 | 54" / 1371 | 10" / 250 |
| 36" / 850 | 49" / 1244 | 62" / 1574 | 10.25" / 260 |
| 38" / 900 | 49" / 1244 | 62" / 1574 | 10.25" / 260 |
| 40" / 950 | 49" / 1244 | 62" / 1574 | 10.25" / 260 |
| 42" / 1000 | 59" / 1498 | 74" / 1879 | 10.50" / 266 |
| 44" / 1100 | 59" / 1498 | 74" / 1879 | 10.50" / 266 |
| 48" / 1200 | 65" / 1651 | 81" / 2057 | 12" / 300 |

*Contact factory for larger diameters



Optional
Curved Bill Feature